



# Rental Crane Chart Book



Self-Erecting Tower Cranes

City Cranes

Climbing Tower Cranes



# The Bigfoot Crane Self Erecting Crane Advantage

- Largest self erecting crane fleet in Canada
- Self erecting crane sizes from 24 to 45 meter jib length
- All the advantage of a conventional tower crane at up to 50% savings.
- Increase job site productivity by as much as 10%.
- Labour savings alone can easily cover crane rental.
- Engineered tie down procedures from the crane manufacturers allow you to avoid obstructions
- Bigfoot Crane personnel can orientate a ticketed operator, or set up a person who has experience on light or medium equipment on a Supervision Program through our Crane Academy.



## Why choose a Bigfoot Self Erecting Tower Crane?



- Conveniently set up in tight areas.
- Replace tower cranes, mobile cranes, and forklifts
- Can be delivered and installed in one day
- Are easily relocated on site as the project progresses
- Outriggers are placed on the ground; no concrete base is required
- Radio remote control allows the operator to double as a rigger
- Operate on 3-phase, 480 volt, 100 amp service if available
- Are supplied with a virtually silent diesel generator, ideal for reducing noise in residential areas
- Can be rail mounted to travel on larger job sites, eliminating the need for multiple cranes
- Can be placed on a sidewalk stand to avoid sidewalk closures and increase hook height
- Can be “luffed” up to 30 degrees to increase working height or avoid obstructions



**A MAINSTAY OF THE CONSTRUCTION INDUSTRY** around the world, the use of Self Erecting Tower Cranes has grown rapidly in North America. These cranes offer significant advantages for hoisting and material handling on construction projects when compared to conventional tower cranes. **Bigfoot Crane Self Erecting Tower Cranes offer many of the advantages of a tower crane at up to 50% savings.**

- A conventional crane can cost up to \$20 - \$30,000 to erect or dismantle
- Tower cranes require expensive 3 - phase power service, which can cost anywhere from \$15-\$20,000 throughout a project
- The concrete base for a conventional tower crane can add another \$20 - \$30,000 to the already high operating cost.

Obviously, these costs make the use of conventional tower cranes prohibitively expensive for all but large projects.



**SELF ERECTING TOWER CRANES OFFER SIGNIFICANT ADVANTAGES OVER FORKLIFTS AND MOBILE CRANES.** Our Self Erecting Tower Cranes can be set up in one place and easily reach most points on a jobsite. As projects get squeezed into tighter and tighter places, forklifts become less and less practical and mobile crane access is limited. Self Erecting Tower Cranes become the only option for hoisting and material handling throughout an entire project

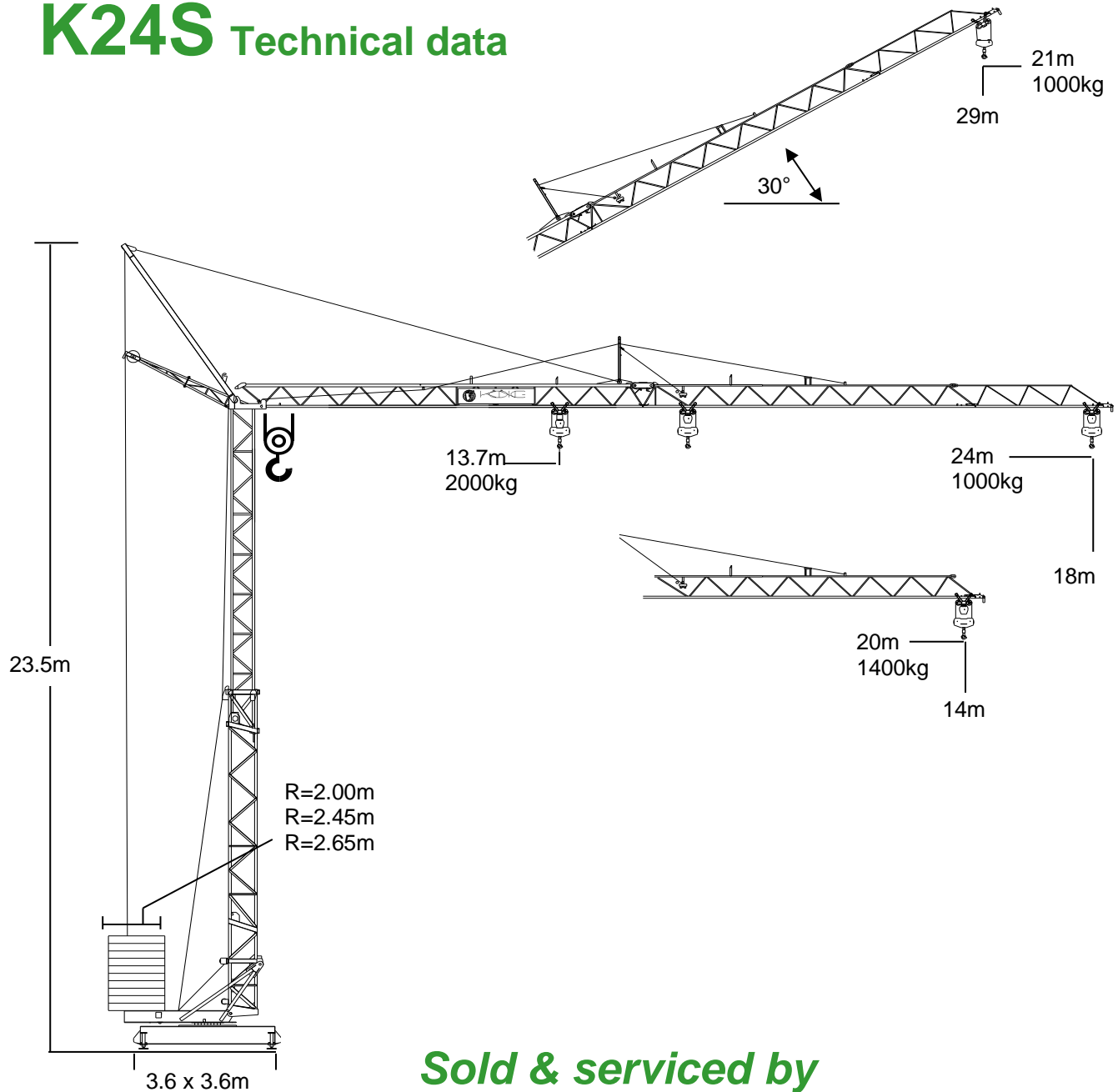
## Bigfoot Crane City Cranes

In addition to our full line of self erecting cranes, Bigfoot Crane offers city cranes with up to 55 meters of jib length. City cranes give you many of the advantages of a Self Erecting Crane, but give you options for more hook height and greater capacity. City cranes can be erected on a ballasted base with outriggers, or with a poured concrete base.



# KÖNIG-KRANE®

## K24S Technical data

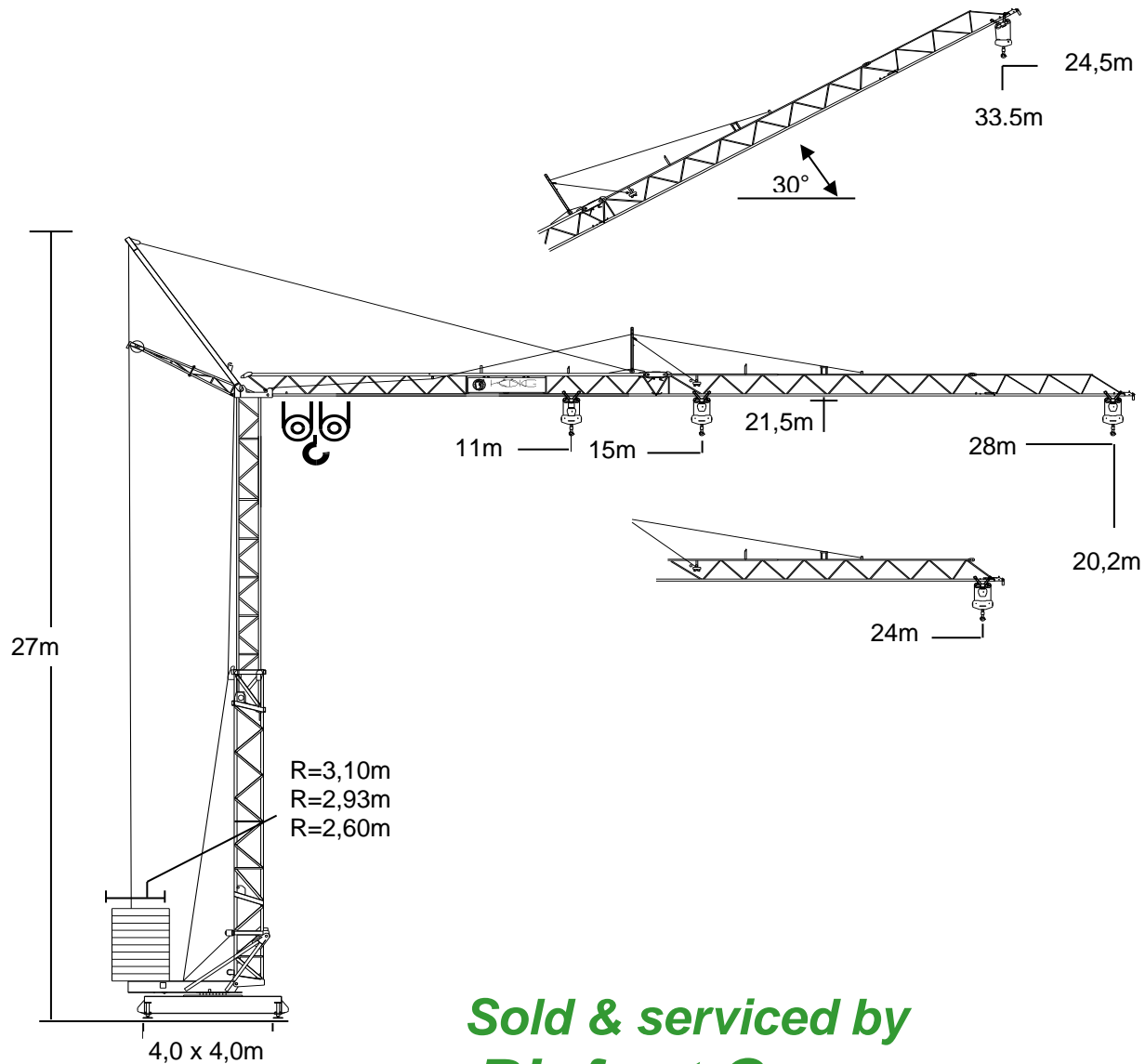


***Sold & serviced by  
Bigfoot Crane***

***The crane system with quality in  
every detail***

# KÖNIG-KRANE®

## K28S-2 Technical data

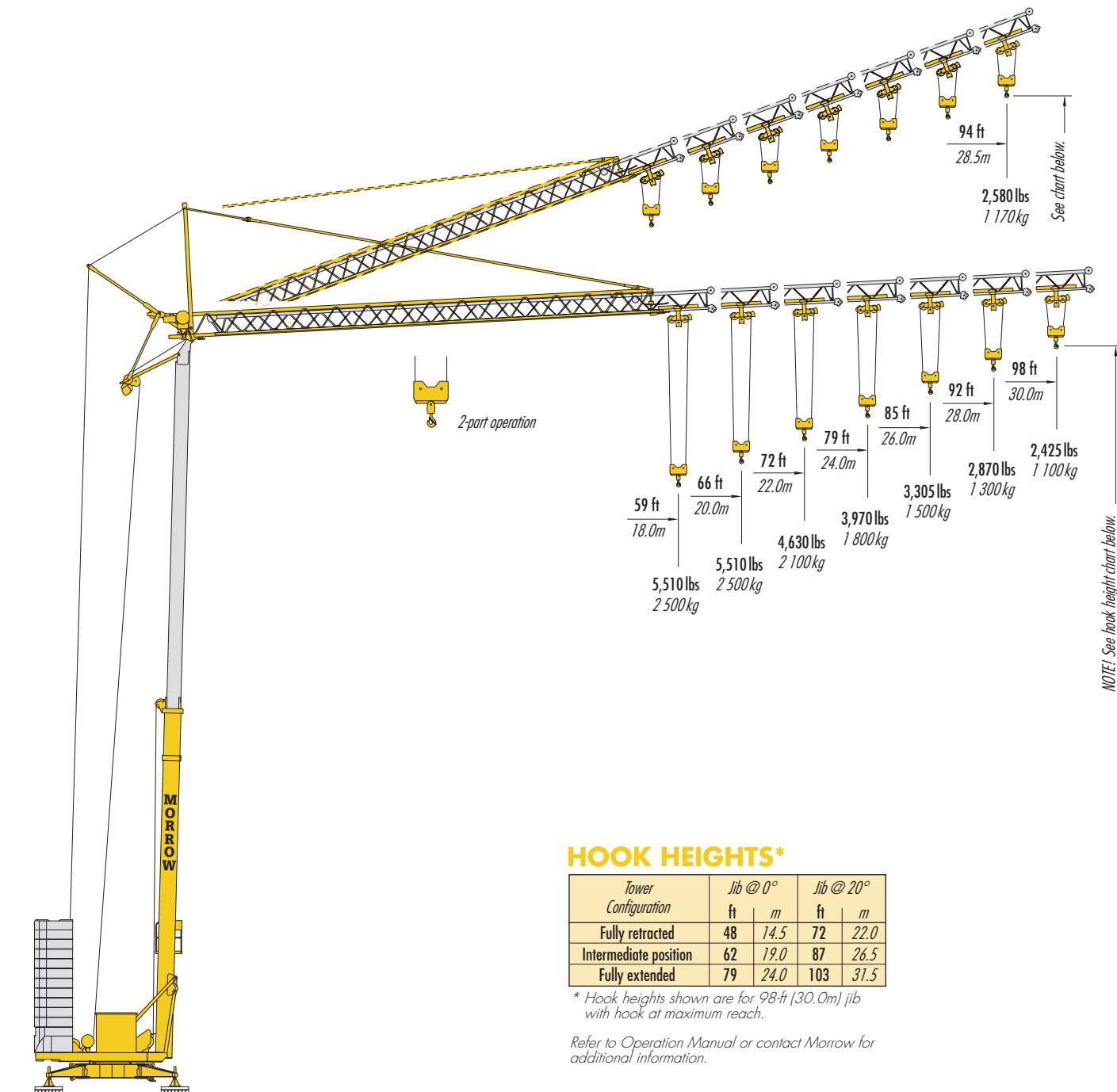


***Sold & serviced by  
Bigfoot Crane***

***The crane system with quality in  
every detail***

# LIEBHERR 32 TT

## SELF-ERECTING CRANE



### HOOK HEIGHTS\*

Tower Configuration	Jib @ 0°		Jib @ 20°	
	ft	m	ft	m
Fully retracted	48	14.5	72	22.0
Intermediate position	62	19.0	87	26.5
Fully extended	79	24.0	103	31.5

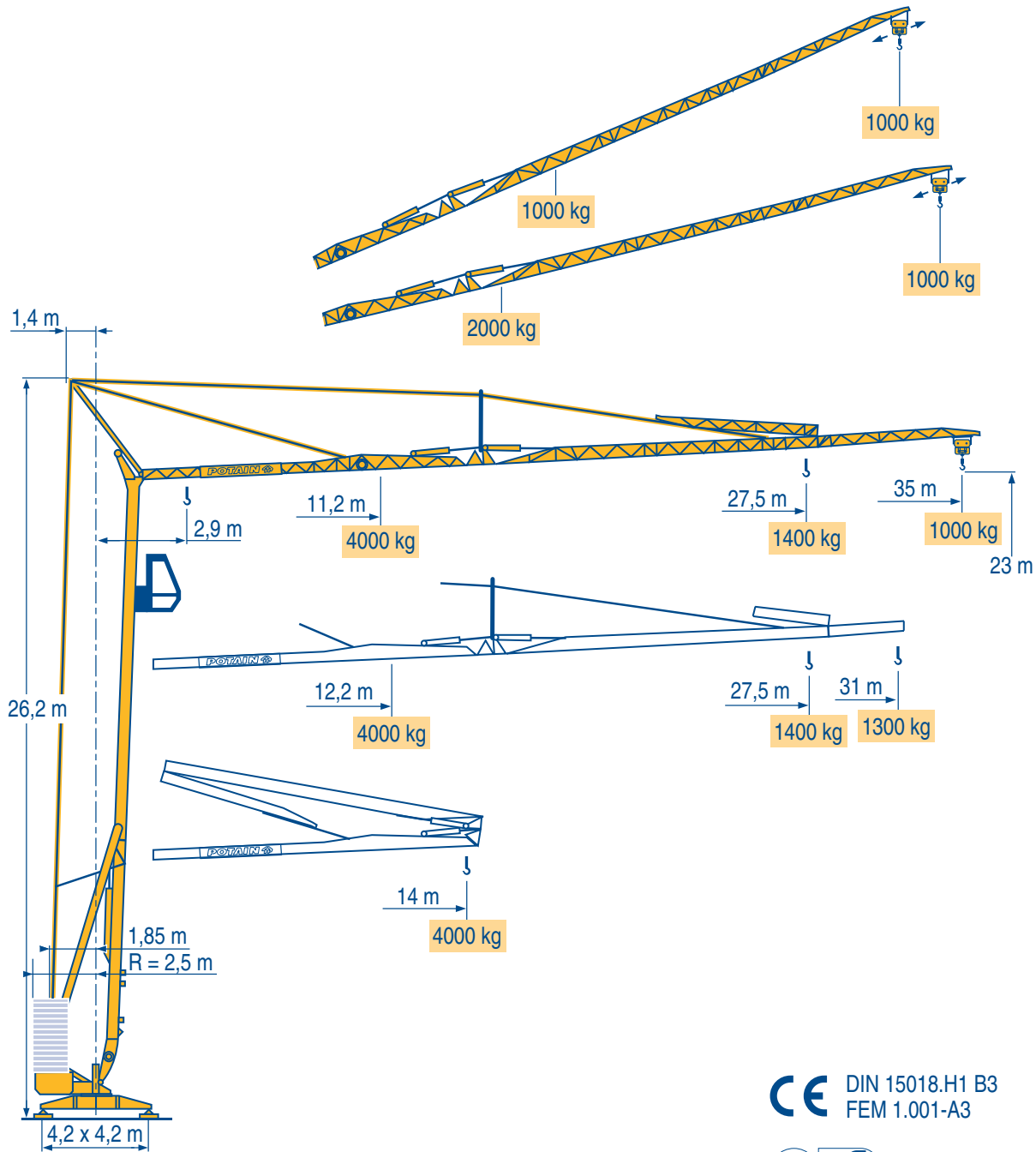
\* Hook heights shown are for 98-ft (30.0m) jib with hook at maximum reach.

Refer to Operation Manual or contact Morrow for additional information.

### STATIONARY

on outriggers with spindle jacks  
maximum height under hook  
103 ft (31.5m)

# HD 40 A



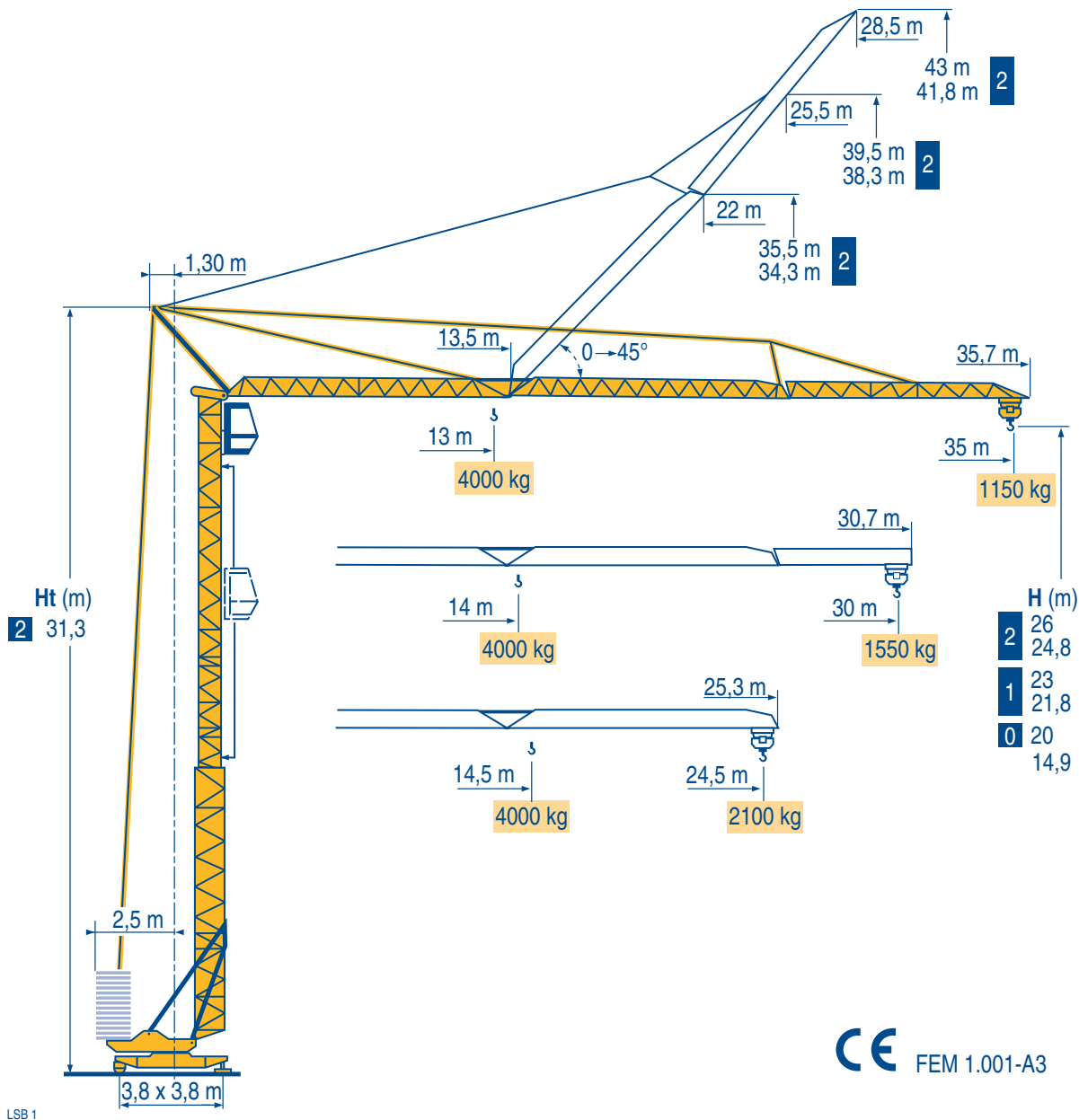
LMP 2

CE DIN 15018.H1 B3  
FEM 1.001-A3



- Igo HD HDM
- HDT
- GTMR
- CITY CRANE
- TOPKIT MD MAXI MD
- MAXI TOPKIT
- Topless MDT
- MR

# GTMR 331 C



Igo  
HD  
HDM



HDT



GTMR



CITY CRANE



TOPKIT MD  
MAXI MD



MAXI TOPKIT



Topless MDT



MR



- H (m)
- 2 26
  - 2 24,8
  - 1 23
  - 1 21,8
  - 0 20
  - 0 14,9

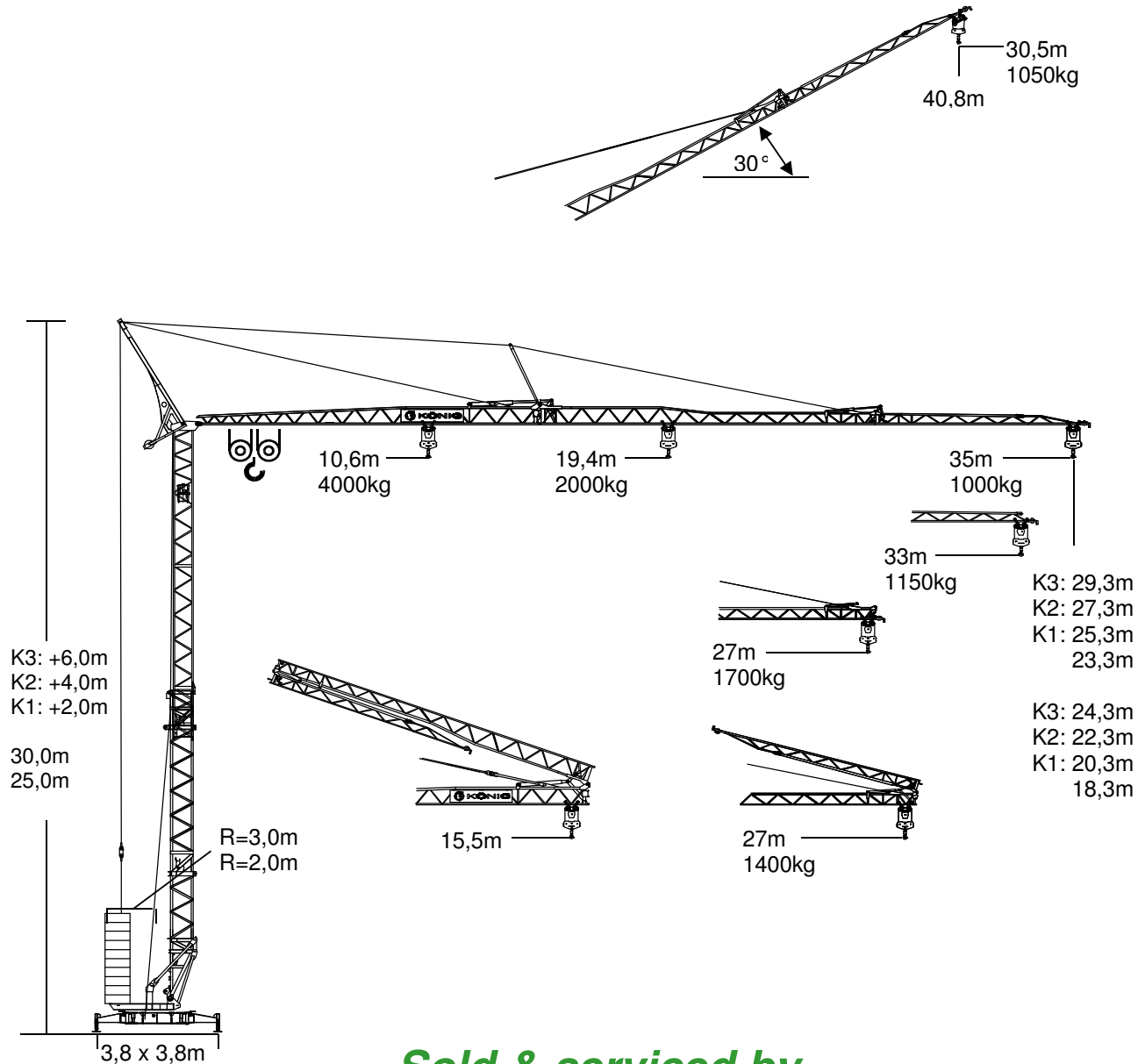
CE FEM 1.001-A3





# KÖNIG-KRANE®

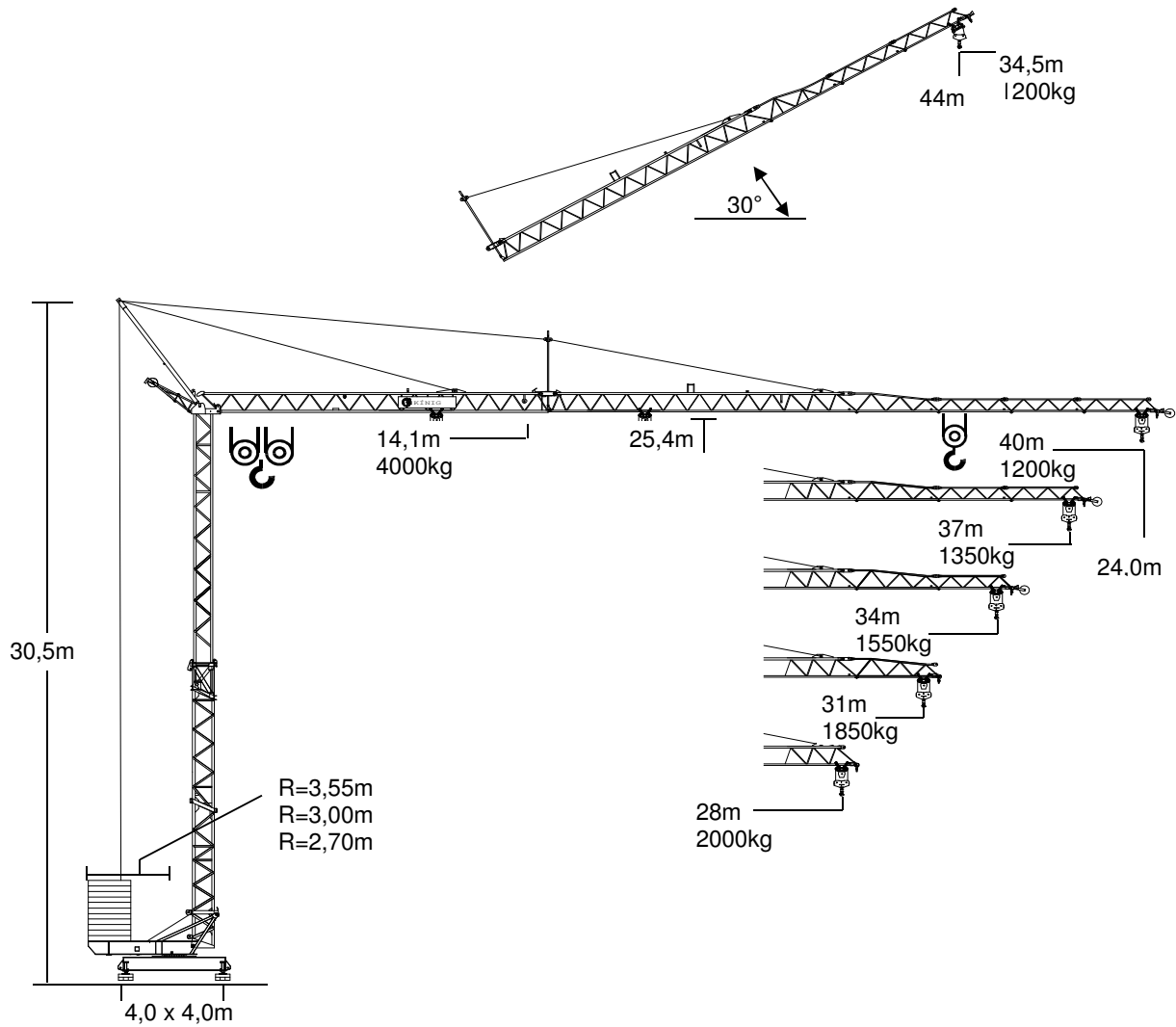
## K1035TKH Technical data

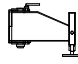


**Sold & serviced by  
Bigfoot Crane**

***The crane system with quality  
in every detail***

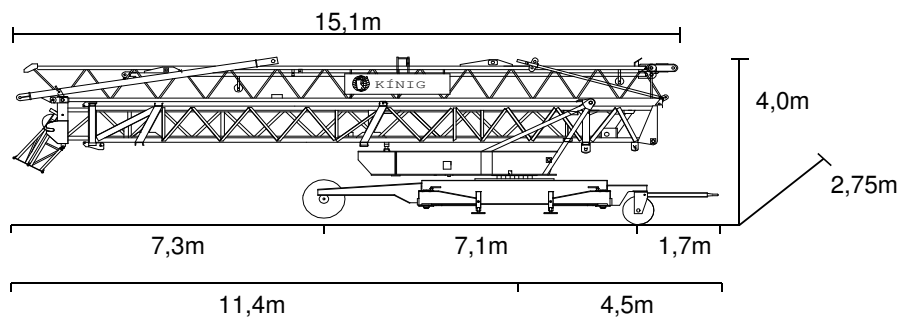
# Koenig K60 Technical data



 ↓	<b>In Betrieb</b> In service <i>En service</i>	<b>außer Betrieb</b> Out of service <i>Hors service</i>
<b>Eckdrücke</b> Reactions <i>Réaction</i>	23,5 t	20,7 t

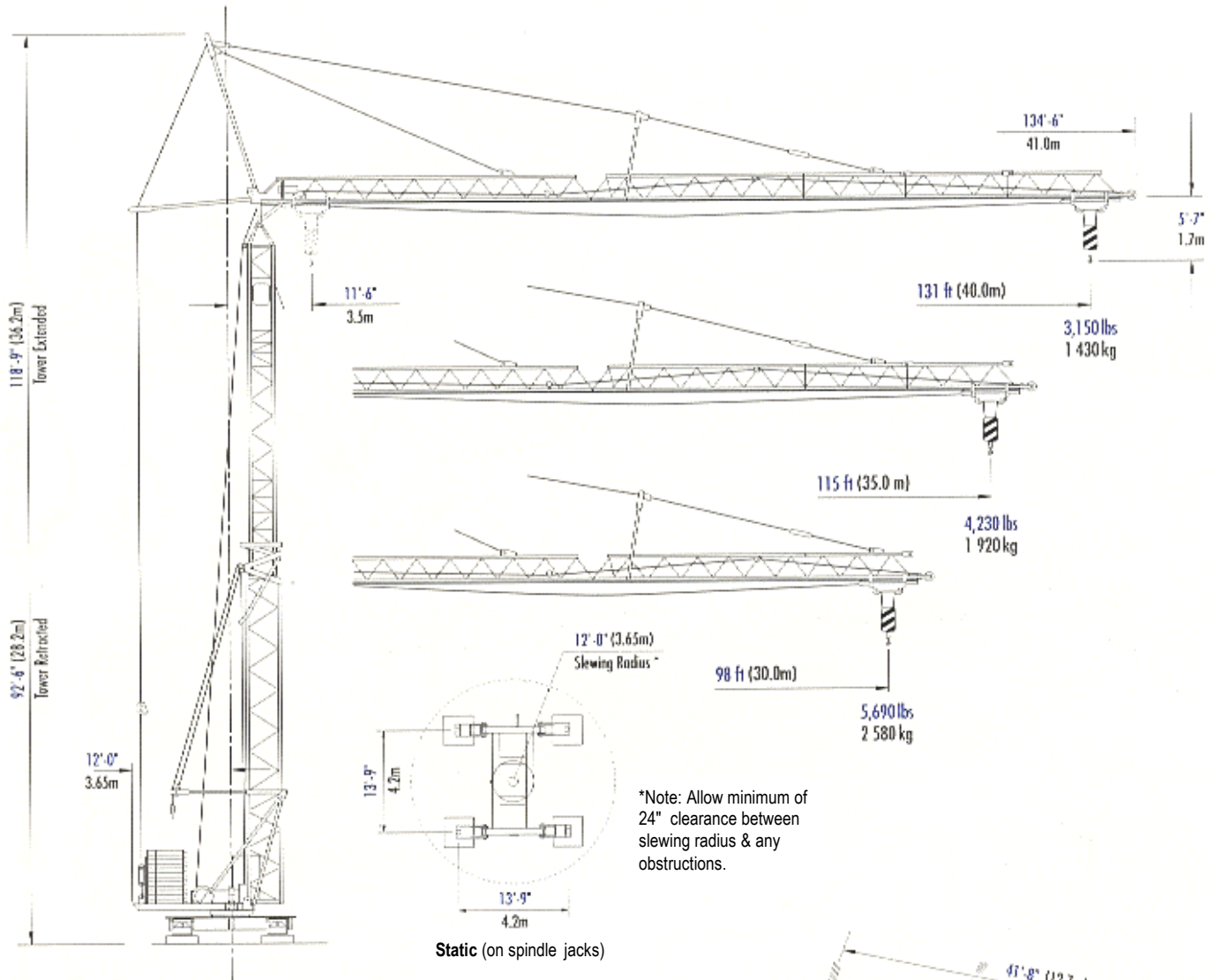
## Straßentransport

Transport by road *Transport sur la route*





# PEINER SMK 108/1

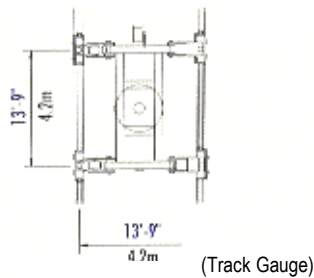


\*Note: Allow minimum of 24" clearance between slewing radius & any obstructions.

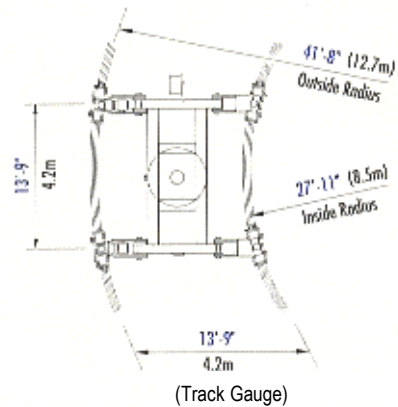
Static (on spindle jacks)

## FREESTANDING (on spindle jacks)

HOOK HEIGHTS		
Tower Configuration	Height Under Hook	
	(h)	(m)
Tower Retracted	65.6	20.0
Tower Extended	91.9	28.0



Rail Traveling (on straight track)



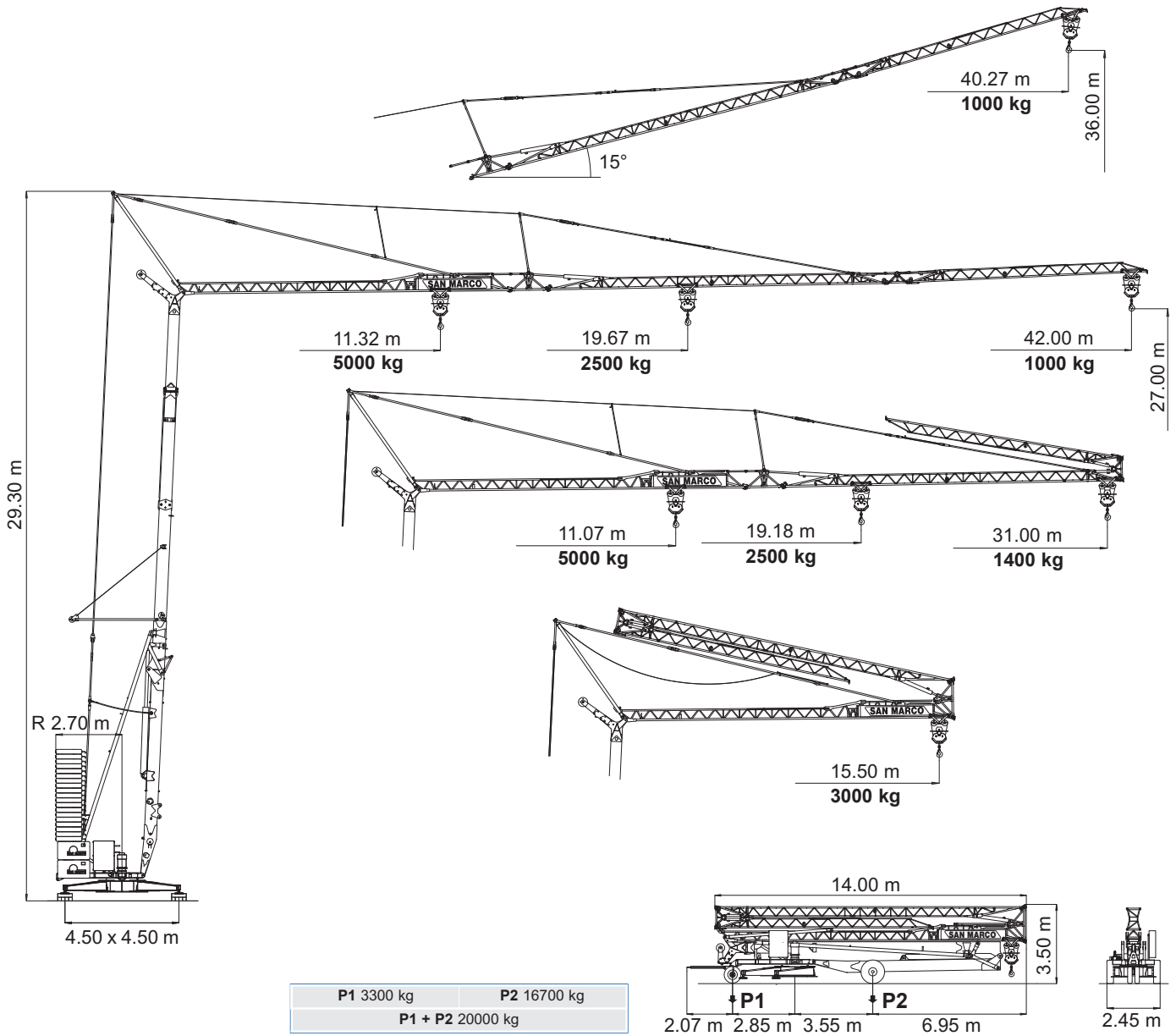
Rail Traveling (on curved track)

**Bigfoot Crane Company Inc.**  
 2170 Carpenter Street, Abbotsford, BC V2T 6B3  
 Phone: 604-854-3218 Fax: 604-854-5716

- IT** Gru automatica idraulica
- UK** Automatic hydraulic crane
- DE** Automatischer hydraulischer Kran
- ES** Grua automatica hidraulica
- FR** Grue automatique hydraulique

# SMH 422

## Triverter 444



- IT** Diagrammi di carico
- UK** Loads diagrams
- DE** Lastkurven
- ES** Curvas de carga
- FR** Courbes de charges

Braccio orizzontale Horizontal jib Waagerechter ausleger Flecha horizontal Flèche horizontale	kg	5000	4500	4000	3500	3000	2500	2000	1900	1800	1700	1600	1500	1400	1300	1200	1100	1000	
	m	11.07	12.00	13.15	14.61	16.53	19.18	23.03	24.03	25.12	26.33	27.68	29.19	31.00					31
	m	11.32	12.28	13.46	14.97	16.95	19.67	23.64	24.66	25.79	27.04	28.42	29.97	31.72	33.71	35.99	38.62	42.00	42

Braccio impennato Inclined jib Schräggestellter ausleger Flecha inclinada Flèche relevée	kg	1000
	m	40.27
		42

Freccia chiusa Closed jib Auslegerspitze zu Flecha plegada Flèche fermée	kg	3000
	m	15.50



**DIN** 15018 H1 B3  
A4 - ISO 4301

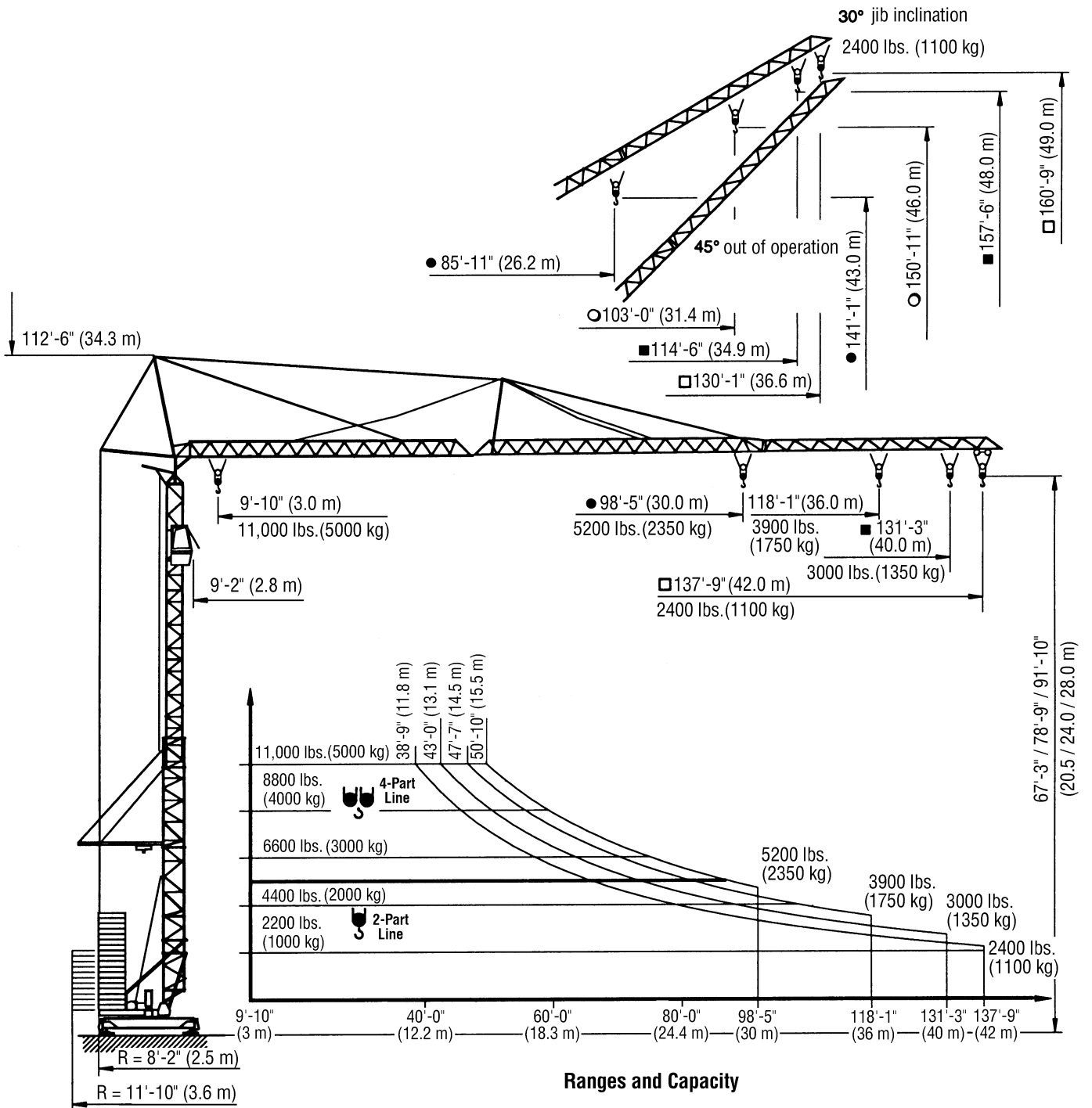




# PEINER SMK 308

Self-Erecting Tower Crane  
11,000 lbs. (5000 kg)  
Lifting Capacity

## SPECIFICATIONS

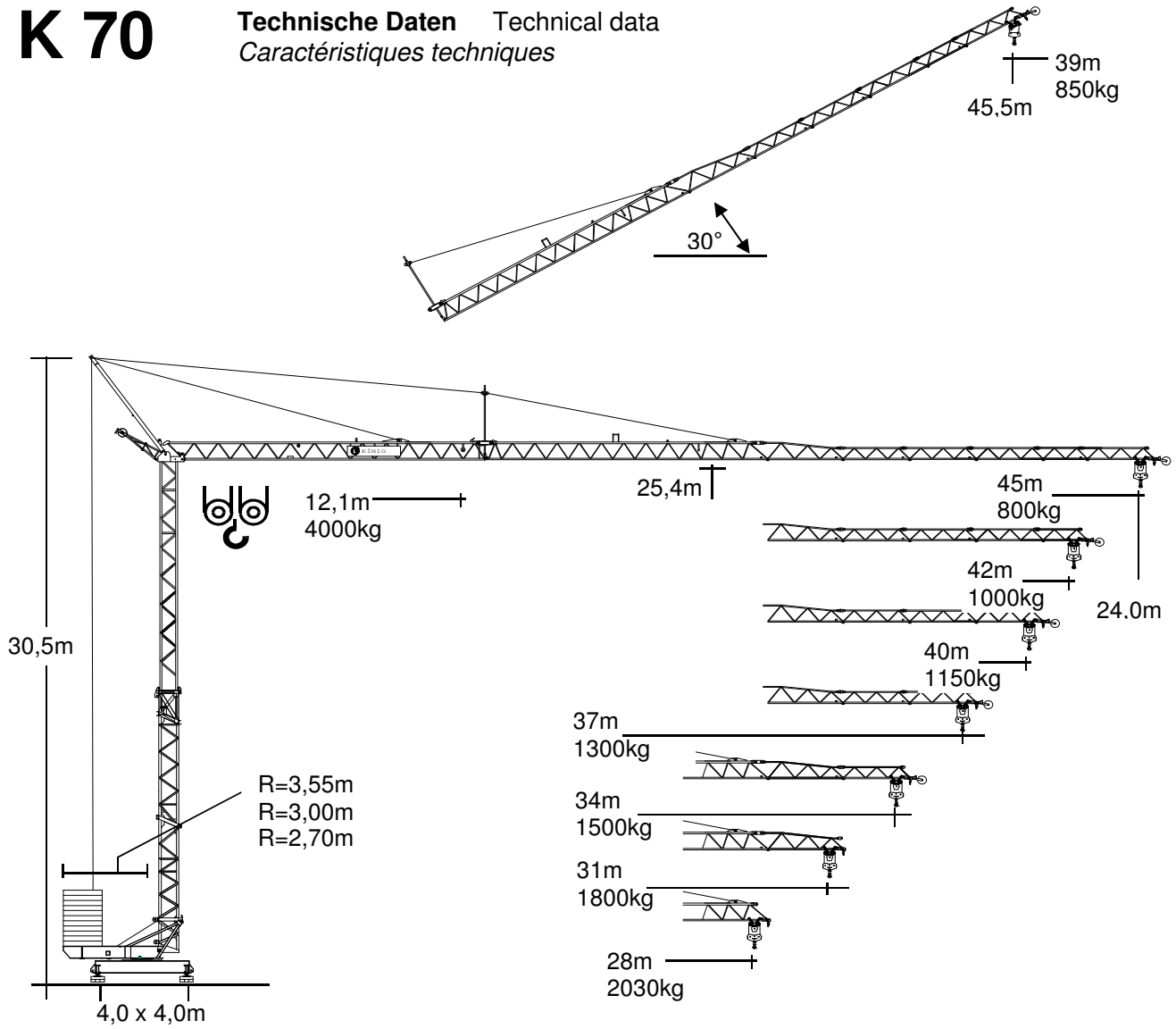


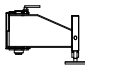
Machines shown may have optional equipment.

simple, available and cost effective™

# K 70

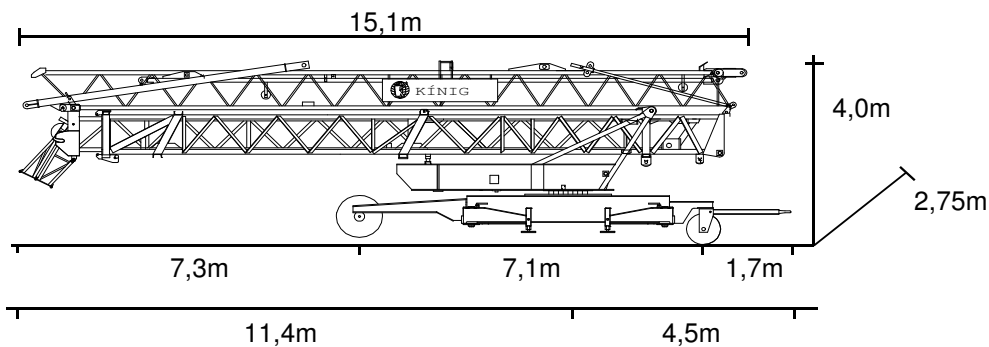
**Technische Daten** Technical data  
*Caractéristiques techniques*



	<b>In Betrieb</b> In service <i>En service</i>	<b>außer Betrieb</b> Out of service <i>Hors service</i>
 <b>Eckdrücke</b> Reactions <i>Réaction</i>	28,5 t	23,7 t

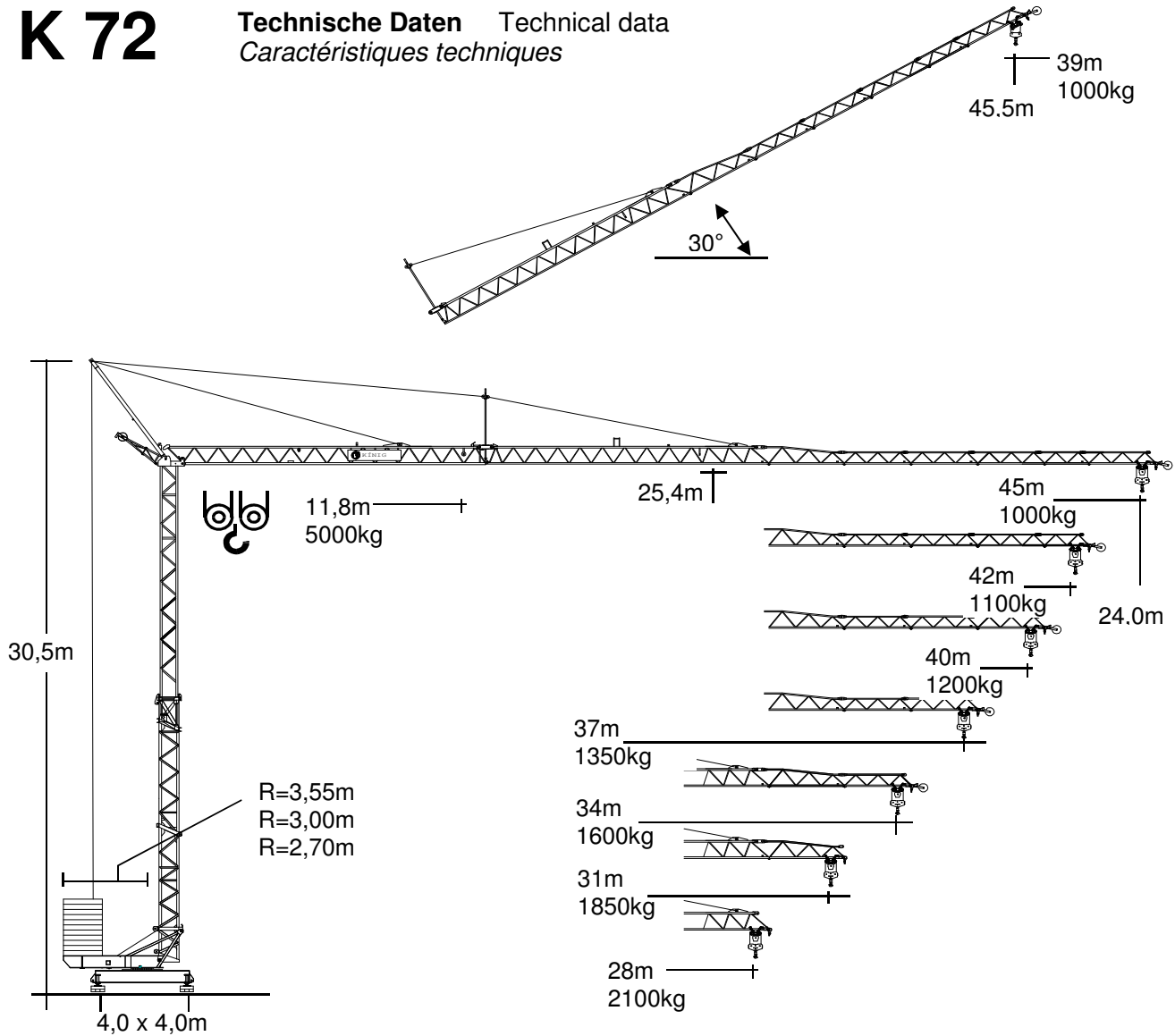
## Straßentransport

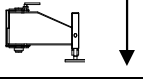
Transport by road *Transport sur la route*



# K 72

Technische Daten Technical data  
Caractéristiques techniques

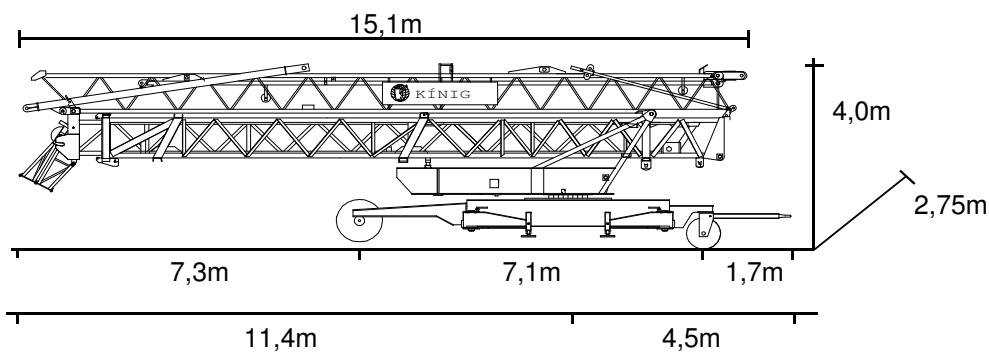


	In Betrieb In service <i>En service</i>	außer Betrieb Out of service <i>Hors service</i>
 <b>Eckdrücke</b> Reactions <i>Réaction</i>	31 t	26,5 t

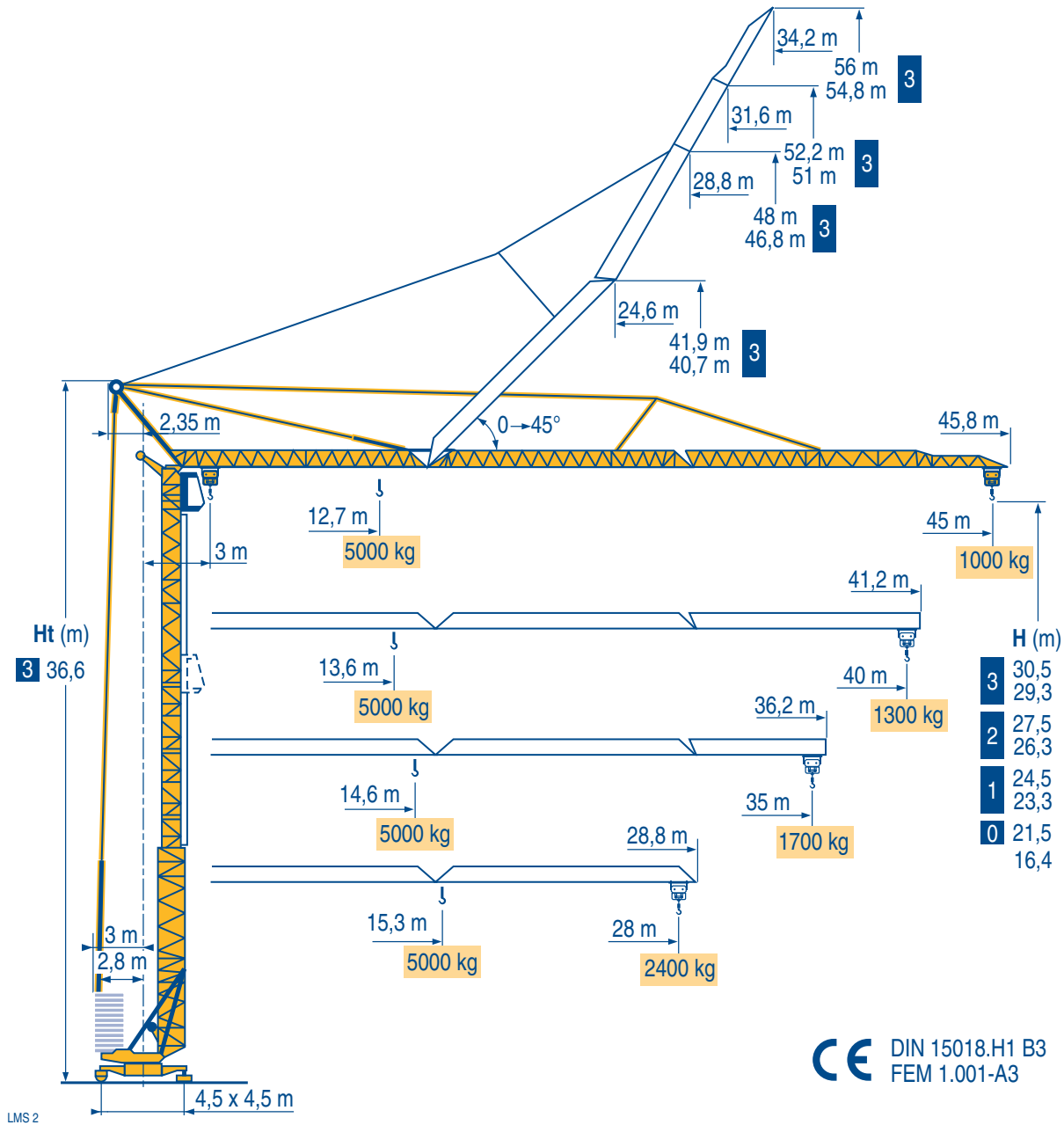
## Straßentransport

Transport by road

*Transport sur la route*



# GTMR 346 A



Igo  
HD  
HDM



HDT



GTMR



CITY CRANE



TOPKIT MD  
MAXI MD



MAXI TOPKIT



Topless MDT



MR



CE DIN 15018.H1 B3  
FEM 1.001-A3

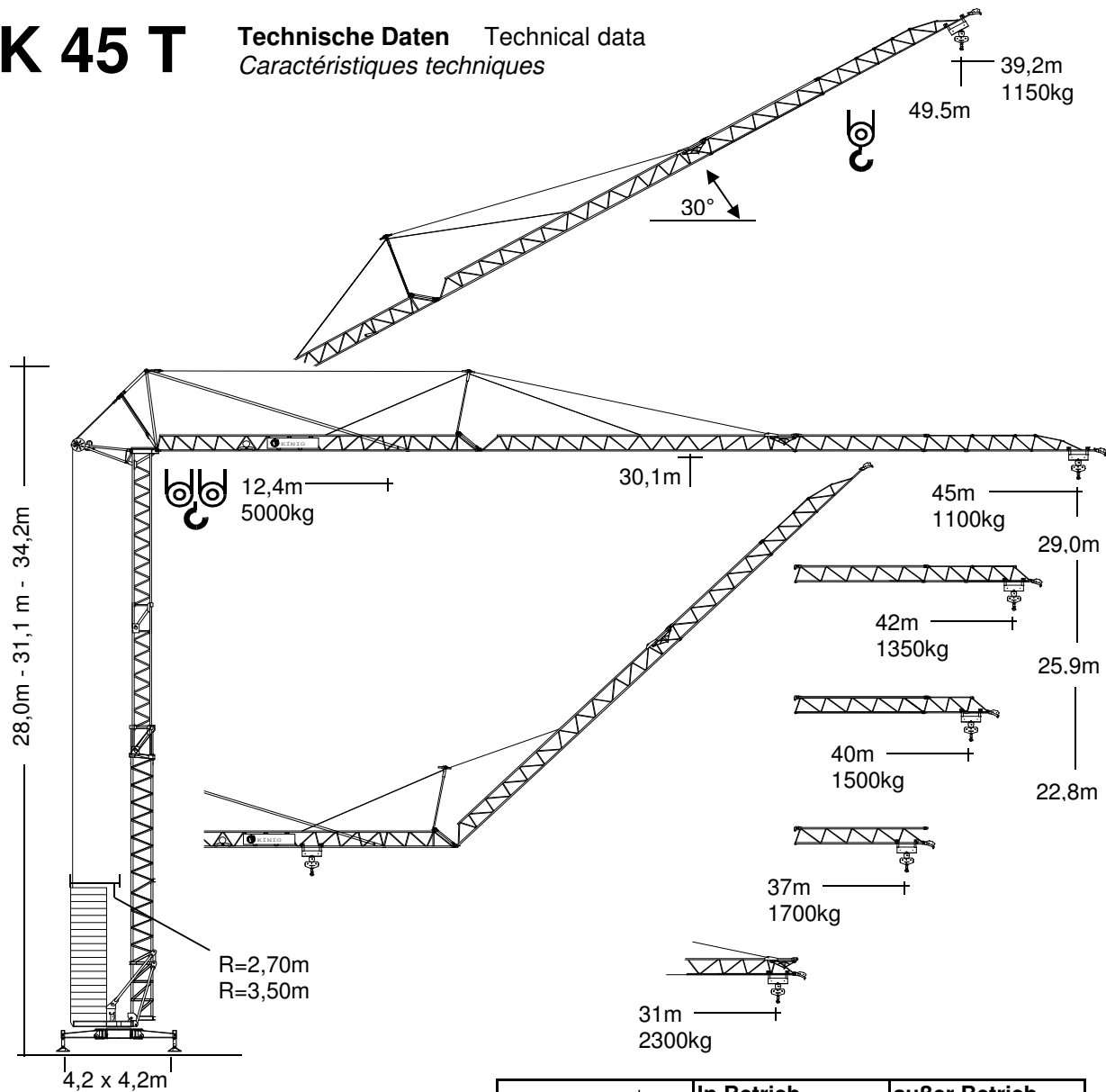


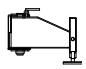
**POTAIN**



# K 45 T

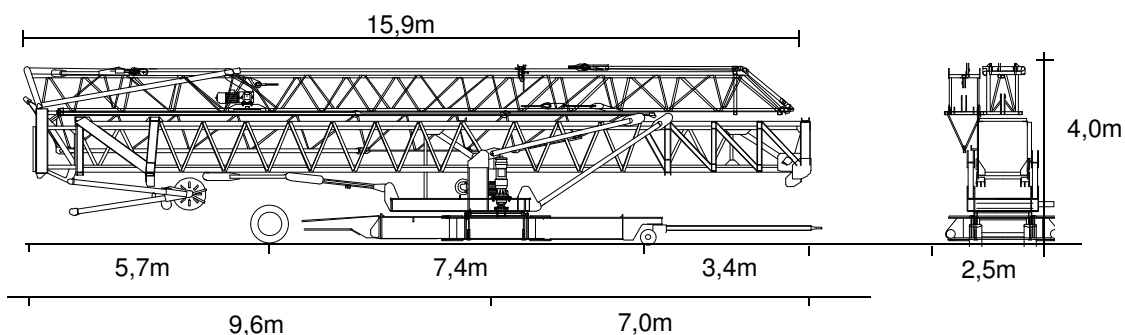
**Technische Daten** Technical data  
*Caractéristiques techniques*



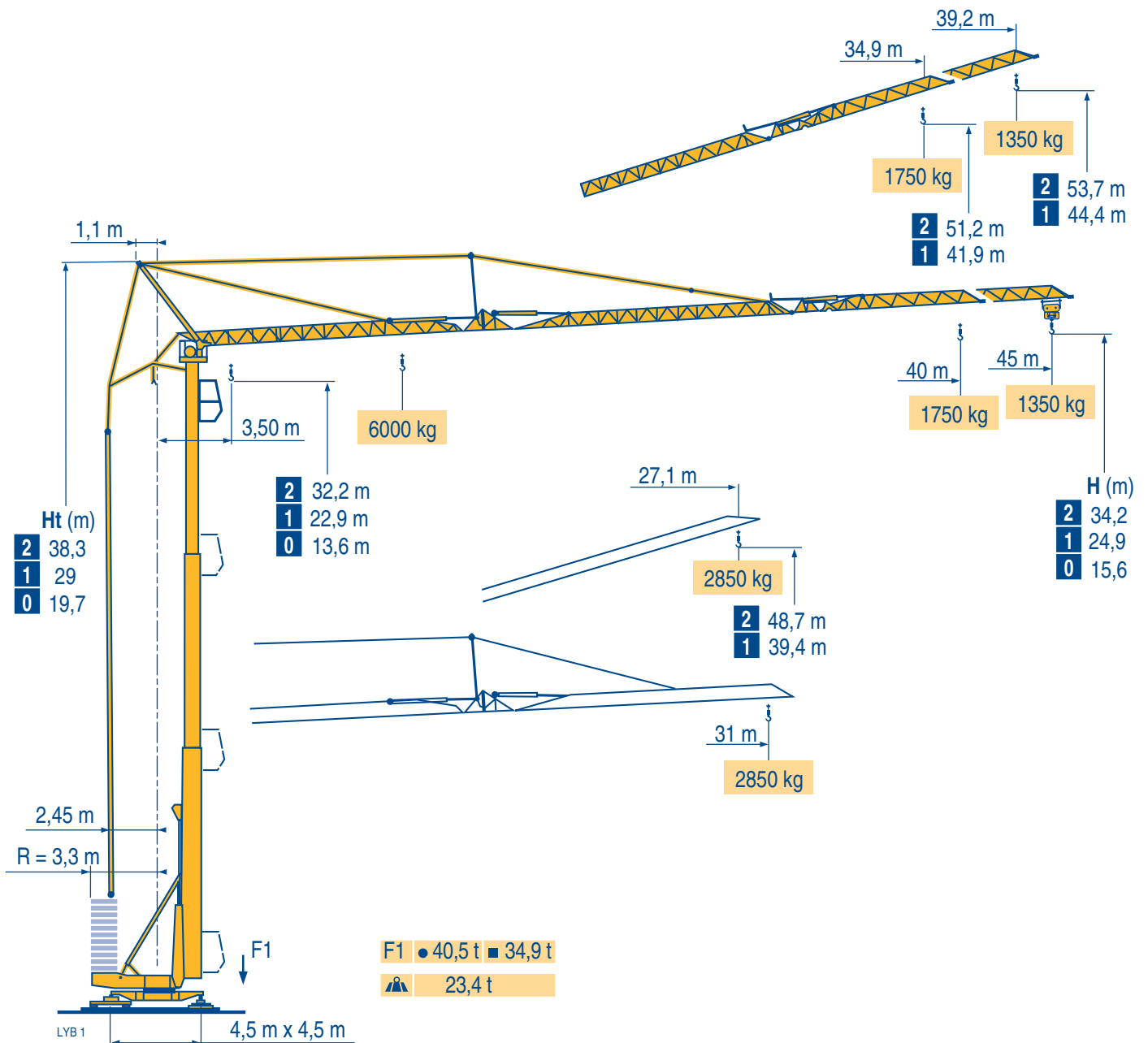
	<b>In Betrieb</b> In service <i>En service</i>	<b>außer Betrieb</b> Out of service <i>Hors service</i>
 ↓		
<b>Eckdrücke</b> Reactions <i>Réaction</i>	30 t	27 t

## Straßentransport

Transport by road *Transport sur la route*



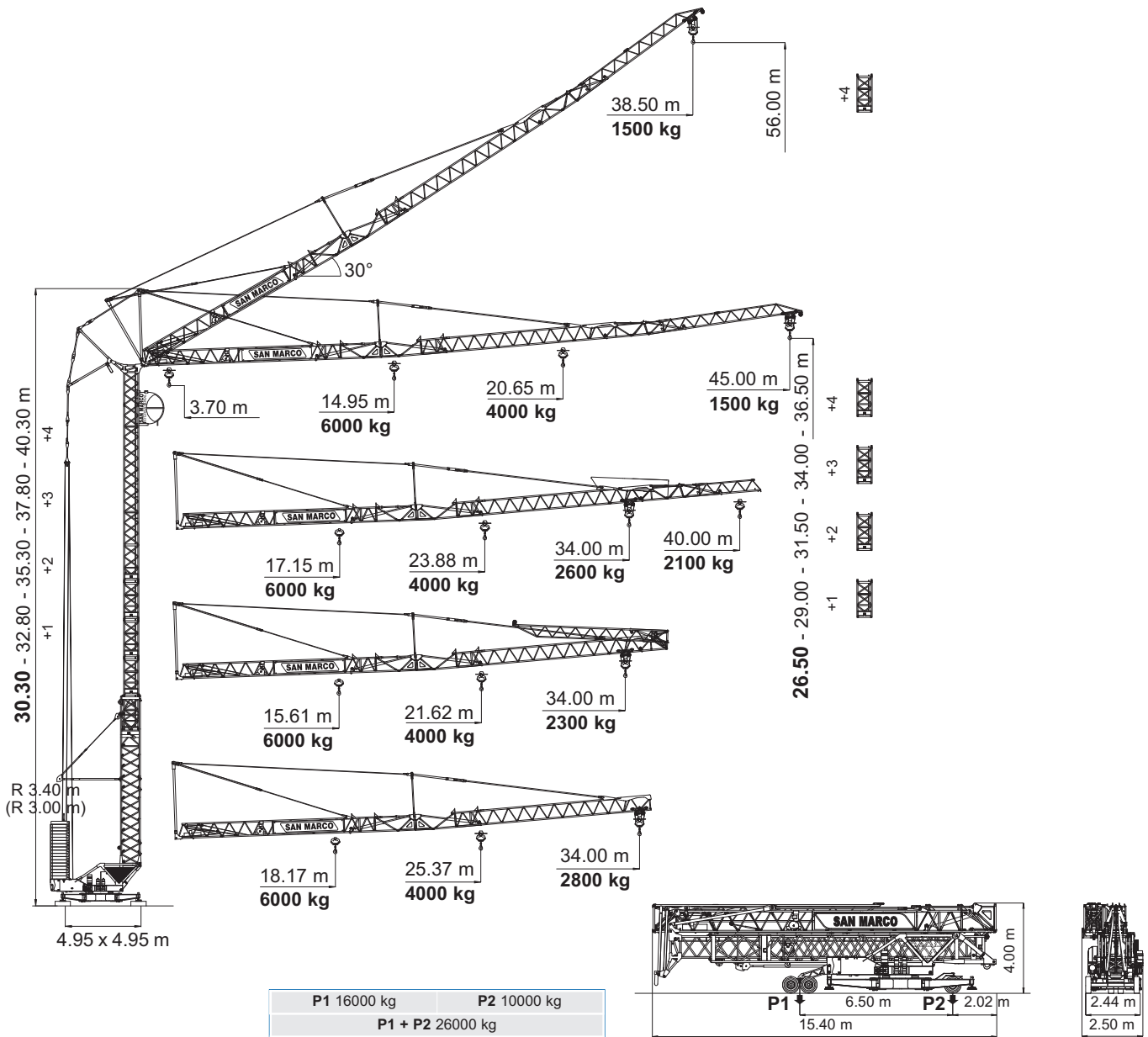
# HDT 80



- IT** Gru a torre automontante
- UK** Self Erecting Tower Crane
- DE** Schnellmontage Turmdrehkran
- ES** Grua a torre automontante
- FR** Grue a tour à montage automatisé

# 45ECI

## Triverter 444



P1 16000 kg	P2 10000 kg
P1 + P2 26000 kg	

- IT** Diagrammi di carico
- UK** Loads diagrams
- DE** Lastkurven
- ES** Curvas de carga
- FR** Courbes de charges

	kg	6000	5500	5000	4500	4000	3500	3000	2800	2500	2300	2100	2000	1900	1800	1700	1600	1500	
Braccio orizzontale Horizontal jib Waagerechter ausleger Flecha horizontal Flèche horizontale	m	18.17	19.50	21.09	23.01	25.37	28.35	32.24	34.00										34
	m	17.15	18.40	19.88	21.67	23.88	26.66	30.30	32.08	35.22	37.73	40.00							40
	m	14.95	16.01	17.26	18.78	20.65	23.02	26.10	27.60	30.27	32.40	34.87	36.27	37.80	39.47	41.31	43.34	45.00	45

	kg	6000	5500	5000	4500	4000	3500	3000	2800	2500	2300	
Freccia chiusa Closed jib Auslegerspitze zu Flecha plegada Flèche fermée	m	15.61	16.73	18.05	19.65	21.62	24.11	27.36	28.95	31.76	34.00	34

	kg	1500	
Braccio impennato Inclined jib Schräggestellter ausleger Flecha inclinada Flèche relevée	m	38.50	45



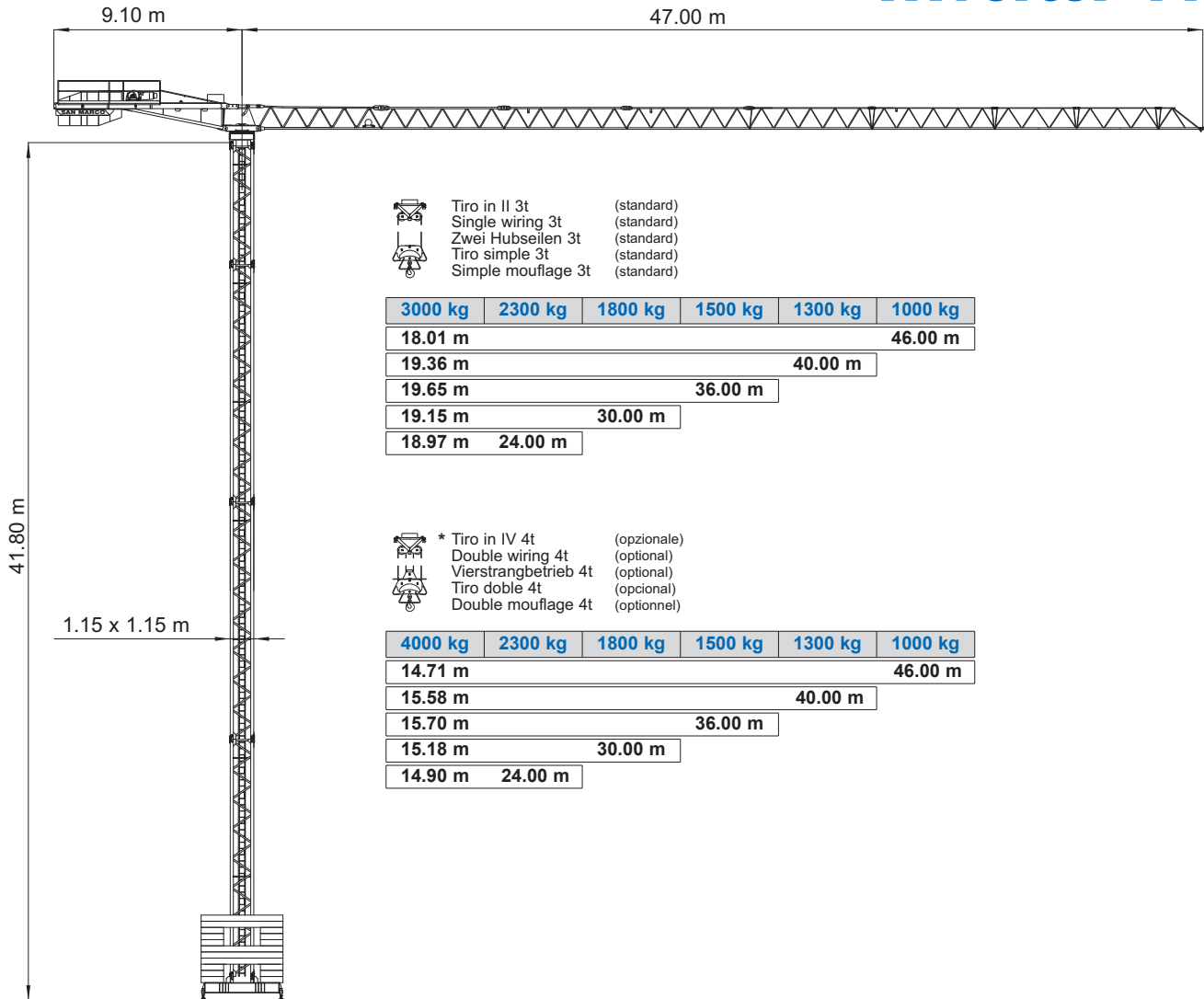
**DIN 15018 H1 B3**  
A4 - ISO 4301



- IT** Gru a torre modulare - Versione City Crane
- UK** Modular tower crane - City Crane Version
- DE** Modulare Turmdrehkran - City Crane Ausführung
- ES** Grua a montaje modular - Versión City Crane
- FR** Grue a tour modulair - Version City Crane

# SMT 460

## Triverter 444



IT	Diagrammi di carico		m	14	16	18	20	22	24	26	28	30	32	34	36	38	40	42	44	46	m	
<b>UK</b>	Loads diagrams			3.00	3.00	3.00	2.66	2.39	2.16	1.97	1.81	1.67	1.55	1.44	1.34	1.26	1.18	1.11	1.05	1.00	46	
<b>DE</b>	Lastkurven		t	3.00	3.00	3.00	2.89	2.59	2.35	2.15	1.97	1.82	1.69	1.57	1.47	1.38	1.30				40	
<b>ES</b>	Curvas de carga			3.00	3.00	3.00	2.85	2.56	2.32	2.12	1.94	1.80										30
<b>FR</b>	Courbes de charges			3.00	3.00	3.00	2.82	2.53	2.30												24	

IT	Diagrammi di carico		m	14	16	18	20	22	24	26	28	30	32	34	36	38	40	42	44	46	m	
<b>UK</b>	Loads diagrams			4.00	3.63	3.17	2.80	2.51	2.26	2.05	1.88	1.73	1.59	1.48	1.37	1.28	1.20	1.12	1.06	1.00	46	
<b>DE</b>	Lastkurven		t	4.00	3.88	3.39	3.00	2.68	2.42	2.20	2.02	1.85	1.71	1.59	1.48	1.38	1.30				40	
<b>ES</b>	Curvas de carga			4.00	3.91	3.42	3.02	2.71	2.44	2.22	2.03	1.87	1.73	1.61	1.50							36
<b>FR</b>	Courbes de charges			4.00	3.76	3.28	2.91	2.60	2.35	2.13	1.95	1.80										30
				4.00	3.68	3.21	2.84	2.54	2.30												24	

Tiro in II 3t   
 Single wiring 3t  
 Zwei Hubseilen 3t  
 Tiro simple 3t  
 Simple mouflage 3t

\* Tiro in IV 4t\*   
 Double wiring 4t  
 Vierstrangbetrieb 4t  
 Tiro doble 4t  
 Double mouflage 4t

\* A richiesta  
 On request  
 Auf Wunsch  
 Sobre demanda  
 Sur demande

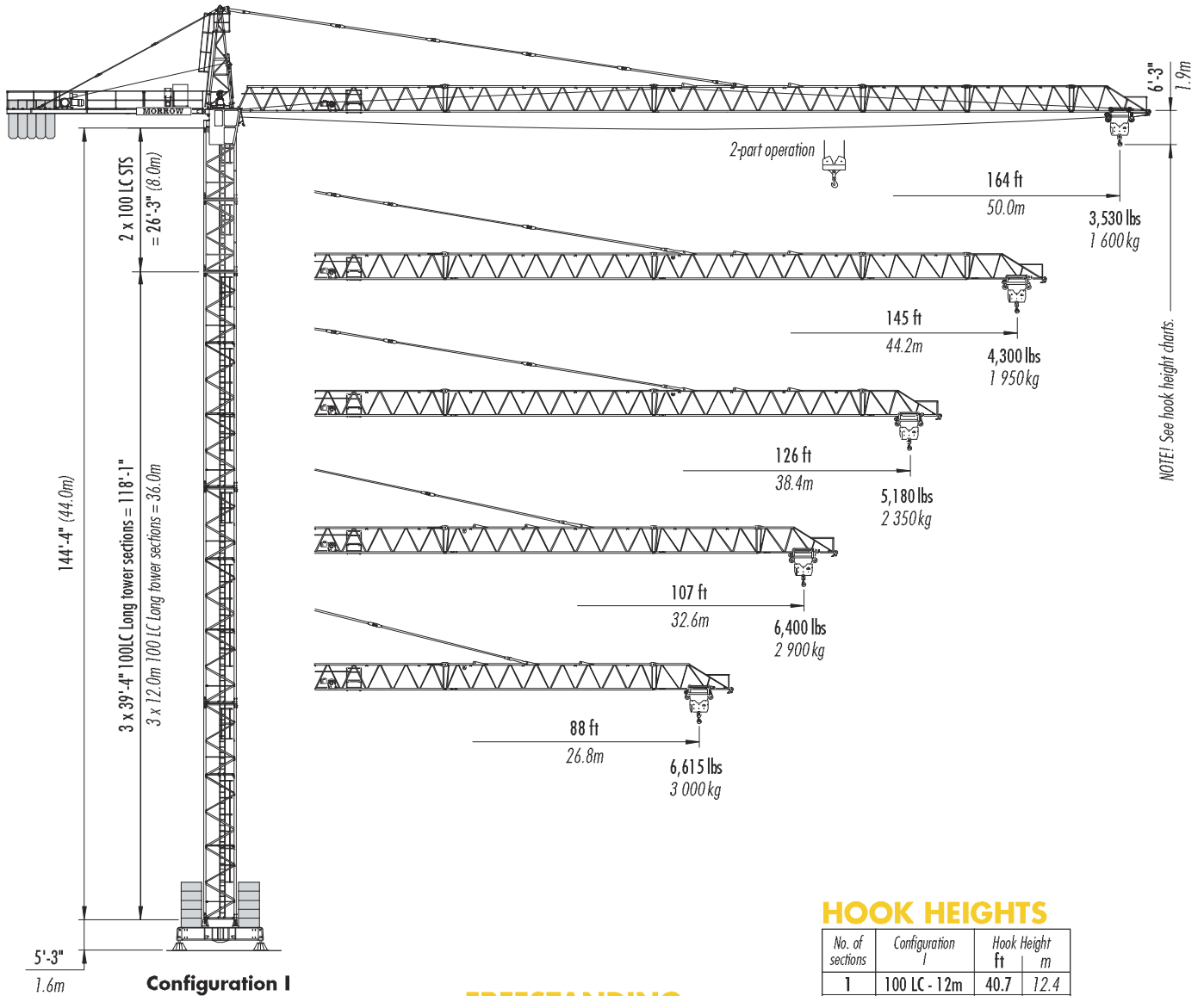


DIN 15018 H1 B3  
 A4 - ISO 4301



# LIEBHERR 100 LC

## TOWER CRANE



### Configuration I

(stationary)  
on adjustable spindle jacks  
maximum height under hook  
145'-8" (44.4m)

### FREESTANDING

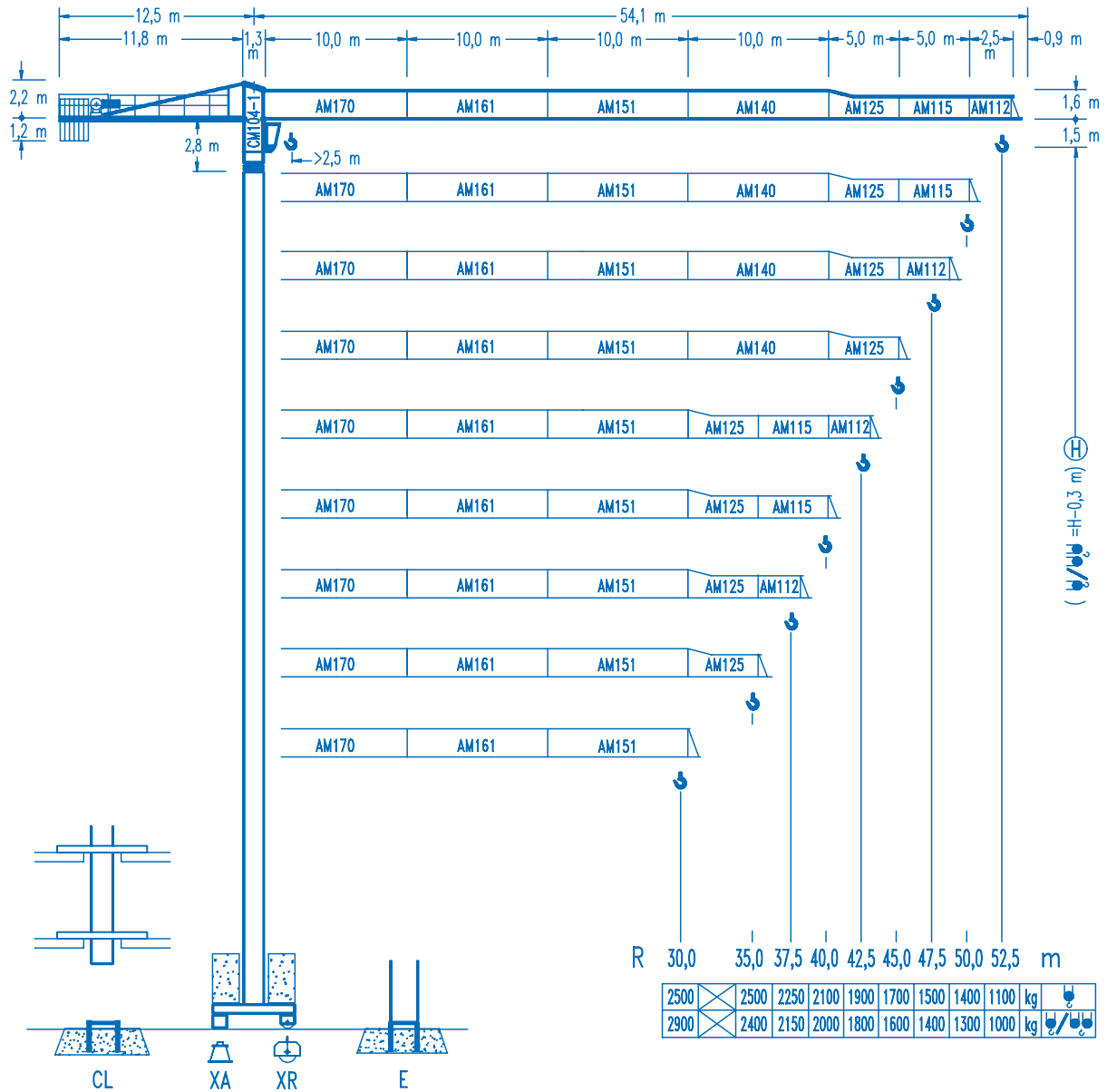
### HOOK HEIGHTS

No. of sections	Configuration I	Hook Height ft	Hook Height m
1	100 LC - 12m	40.7	12.4
2	100 LC - 12m	80.1	24.4
3	100 LC - 12m	119.4	36.4
4	100 LC - 4m	132.5	40.4
5	100 LC - 4m	145.7	44.4

Other tower combinations are possible.  
Contact Morrow for additional information.



# Morrow Equipment



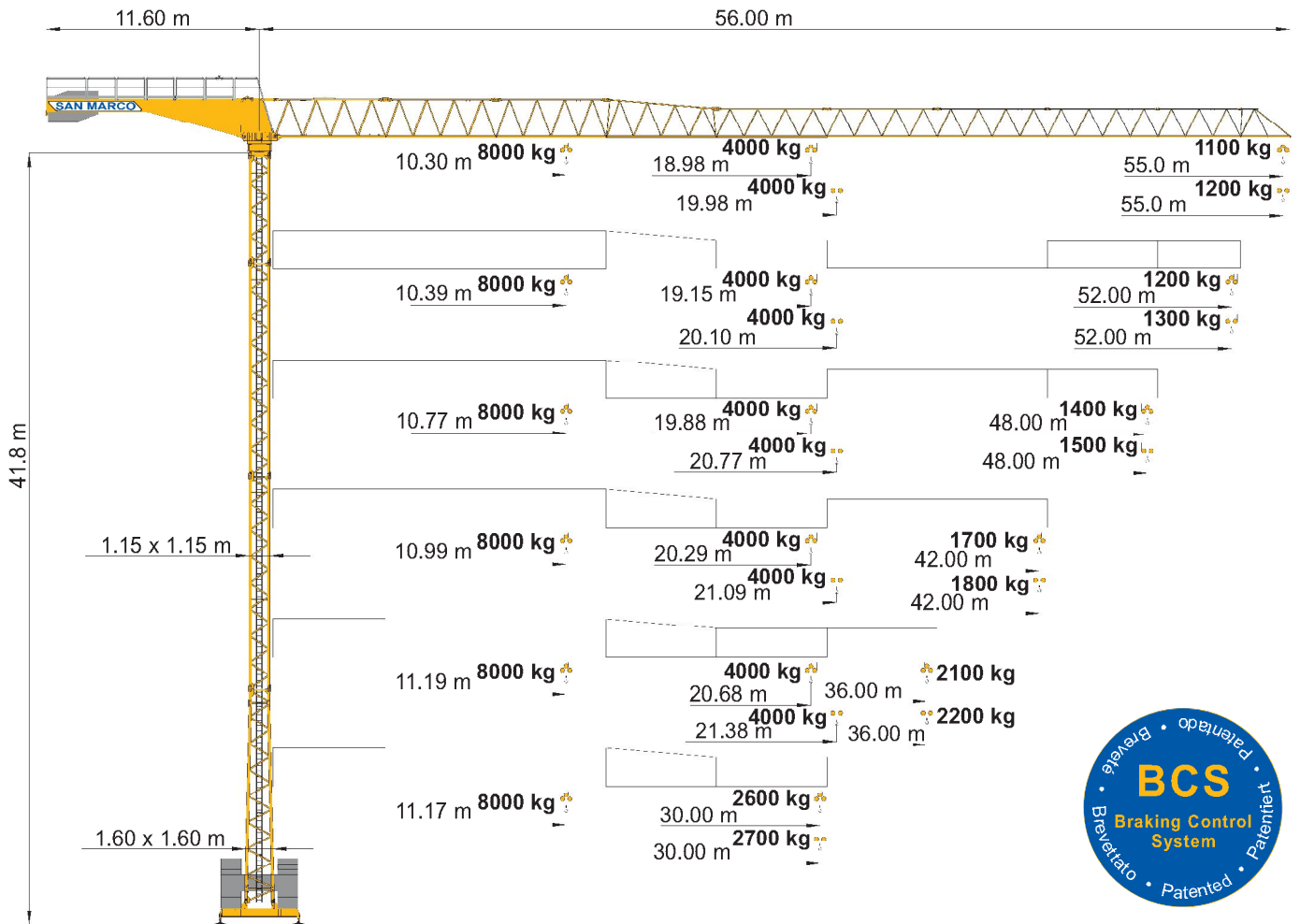
CE  
DIN 15018 H1 B3

R	R(Cmax)	Cmax	20,0	25,0	30,0	35,0	37,5	40,0	42,5	45,0	47,5	50,0	52,5	kg
52,5	26,8 m	2500	2500	2500	2190	1820	1680	1550	1440	1340	1250	1170	1100	⊕
	14,2 m	5000	3380	2600	2080	1720	1580	1450	1340	1240	1150	1070	1000	
50,0	30,8 m	2500	2500	2500	2500	2150	1980	1840	1710	1590	1490	1400	⊕	
	16,3 m	5000	3960	3060	2470	2050	1880	1740	1610	1490	1390	1300		
47,5	30,9 m	2500	2500	2500	2500	2160	1990	1850	1720	1600	1500	⊕		
	16,3 m	5000	3980	3080	2480	2060	1890	1750	1620	1500	1400			
45,0	32,4 m	2500	2500	2500	2500	2290	2110	1960	1820	1700	⊕			
	17,1 m	5000	4200	3250	2630	2190	2010	1860	1720	1600				
42,5	33,6 m	2500	2500	2500	2500	2380	2200	2040	1900	⊕				
	17,8 m	5000	4380	3390	2740	2280	2100	1940	1800					
40,0	34,4 m	2500	2500	2500	2500	2450	2260	2100	⊕					
	18,2 m	5000	4500	3490	2820	2350	2160	2000						
37,5	34,2 m	2500	2500	2500	2500	2440	2250	⊕						
	18,1 m	5000	4470	3470	2800	2340	2150							
35,0	35,0 m	2500	2500	2500	2500	2500	⊕							
	18,5 m	5000	4580	3560	2880	2400								
30,0	30,0 m	2500	2500	2500	2500	⊕								
	18,6 m	5000	4610	3580	2900									

- IT** Gru a torre modulare - Versione City Crane
- UK** Modular tower crane - City Crane Version
- DE** Modular aufsatz kran - Version City Crane
- ES** Grua a montaje modular - Versión City Crane
- FR** Grue a tour modulaire - Version City Crane

# SMT 551

## Triverter 444



	m	10	12	14	16	18	20	22	24	26	28	30	32	34	36	38	40	42	44	46	48	50	52	55	m	
<b>IT</b> Diagrammi di carico		4.004	0.004	0.004	0.004	0.004	0.004	0.003	633	282	992	752	532	352	182	041	911	791	691	591	511	431	351	291	20	55
<b>UK</b> Loads diagrams		4.004	0.004	0.004	0.004	0.004	0.003	653	303	012	762	552	362	202	051	921	801	701	601	521	441	361	301	22	52	
<b>DE</b> Lastkurven	t	4.004	0.004	0.004	0.004	0.004	0.003	783	423	122	872	642	452	282	132	001	881	771	671	581	501	421	341	261	18	52
<b>ES</b> Curvas de carga		4.004	0.004	0.004	0.004	0.004	0.003	843	473	172	912	682	492	322	162	031	911	801	701	601	521	441	361	301	22	52
<b>FR</b> Courbes de charges		4.004	0.004	0.004	0.004	0.004	0.003	893	523	212	952	722	522	352	20											30

Tiro in II  
Single wiring  
Zwei Hubsellen  
Tiro simple  
Simple mouflage



	m	10	12	14	16	18	20	22	24	26	28	30	32	34	36	38	40	42	44	46	48	50	52	55	m	
		4.004	0.004	0.004	0.004	0.004	0.003	533	182	892	652	432	252	081	941	811	691	591	491	411	331	251	191	10	55	
		4.004	0.004	0.004	0.004	0.004	0.003	553	202	912	662	452	262	101	951	821	701	601	501	421	341	261	181	10	52	
	t	4.004	0.004	0.004	0.004	0.004	0.003	743	373	072	812	582	392	222	061	931	811	701	601	521	441	361	301	22	52	
		4.004	0.004	0.004	0.004	0.004	0.003	793	423	112	852	622	422	252	10											36
		4.004	0.004	0.004	0.004	0.004	0.003	753	393	082	822	60														30

Tiro in IV disinserito  
Disconnected double wiring  
Vierstrangbetrieb ausser Betrieb  
Tiro doble desconectado  
Double mouflage hors service



	m	10	12	14	16	18	20	22	24	26	28	30	32	34	36	38	40	42	44	46	48	50	52	55	m	
		8.007	115	965	114	463	953	533	182	892	652	432	252	081	941	811	691	591	491	411	331	251	191	10	55	
		8.007	155	995	144	493	973	553	202	912	662	452	262	101	951	821	701	601	501	421	341	261	181	10	52	
	t	8.007	406	205	324	654	123	683	323	022	772	542	352	182	031	901	781	671	571	481	401	321	241	161	10	52
		8.007	516	295	404	724	183	743	373	072	812	582	392	222	061	931	811	701	601	521	441	361	301	22	52	
		8.007	616	385	484	784	233	793	423	112	852	622	422	252	10											36
		8.007	546	325	424	744	193	753	393	082	822	60														30

Tiro in IV inserito  
Connected double wiring  
Vierstrangbetrieb in Betrieb  
Tiro doble conectado  
Double mouflage en service



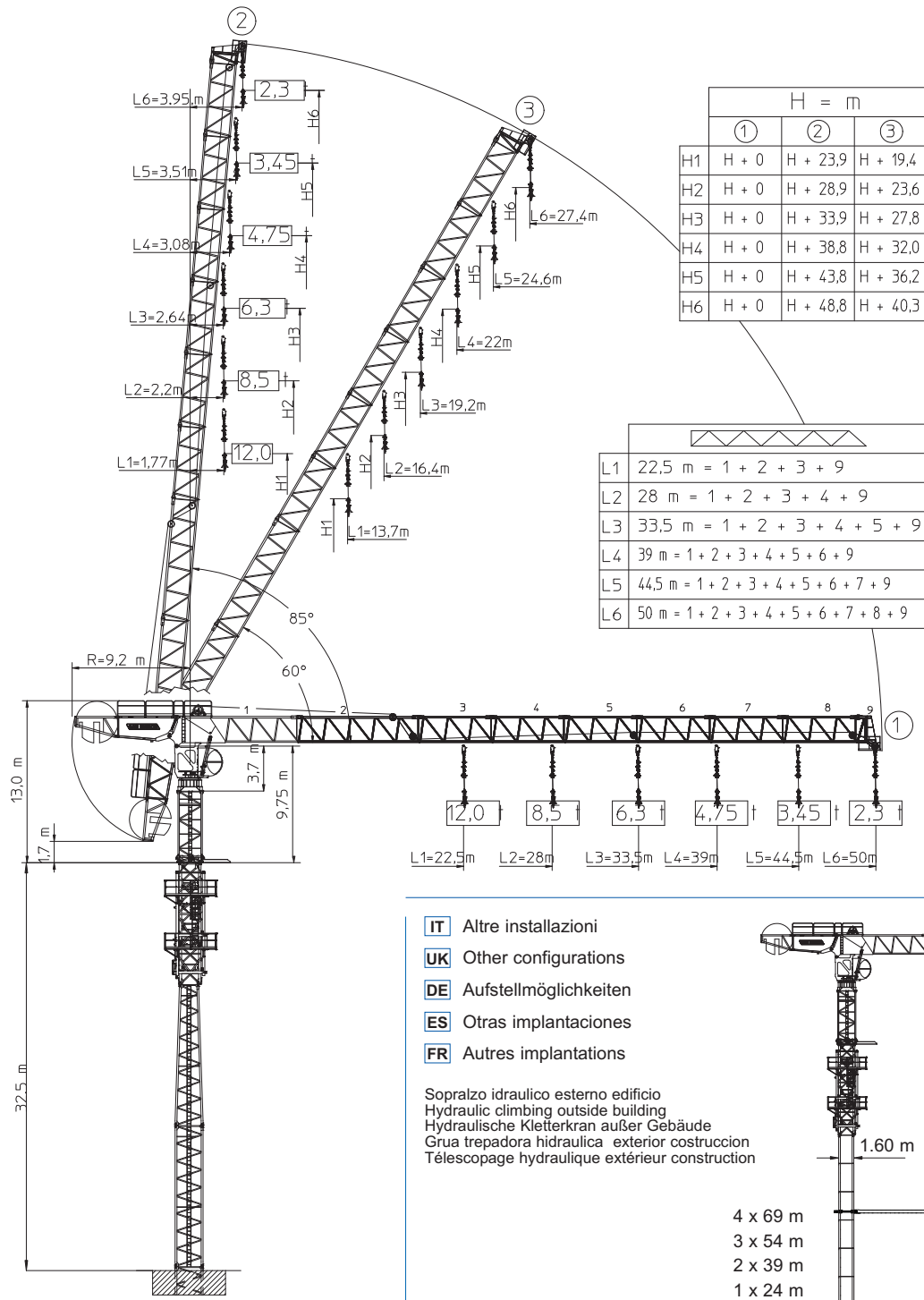
DIN 15018 H1 B3  
ISO 4301



- IT** Gru a torre a braccio impennabile
- UK** Luffing jib tower crane
- DE** Turmdrehkran mit Steilstellung-Ausleger
- ES** Grua torre con pluma abatible
- FR** Grue à tour à flèche rélevable

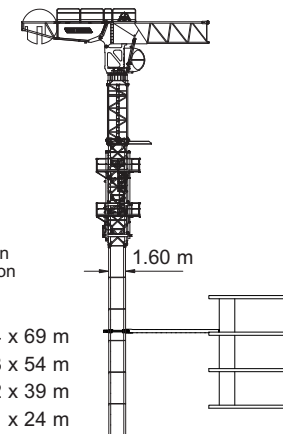
# SMLH 500

## Triverter 444



- IT** Altre installazioni
- UK** Other configurations
- DE** Aufstellmöglichkeiten
- ES** Otras implantaciones
- FR** Autres implantations

Sopralzo idraulico esterno edificio  
 Hydraulic climbing outside building  
 Hydraulische Kletterkran außer Gebäude  
 Grúa trepadora hidraulica exterior construcción  
 Télésopage hydraulique extérieur construction



DIN 15018 H1 B3  
 A4 - ISO 4301

